



THERMOSTATIC VALVES



HUEGLITECH AND FLUID POWER ENERGY

Fluid Power Energy (FPE) have been in business for over 40 years, supplying a variety of key components to prolong the life of machines. Their 3 main products are thermostatic valves, 'SpinClean' centrifugal filters and 'AirStop' emergency shut-down valves.

Thermostatic valves are essential to not only maintain an optimum operating temperature but also to maintain the correct viscosity of lubricating oil in many applications. FPE produce and stock thermostatic valves in a wide range of sizes, materials and temperature ranges. Applications range from cooling systems for diesel engines and compressors, to lubricating systems for gas turbines to heating systems for greenhouses. Their valves are directly interchangeable with products from the industry leader and they also produce inserts which can be used as direct replacements in existing valves.

HUEGLI TECH have been supplying control and regulation components for more than 50 years. Our core business is internal combustion engine control and whilst the range of products we supply is chosen to suit this application, many of our components are also ideal for use in other fields. We are constantly on the outlook for new specialist applications and have the staff and experience to support a wide range of projects.

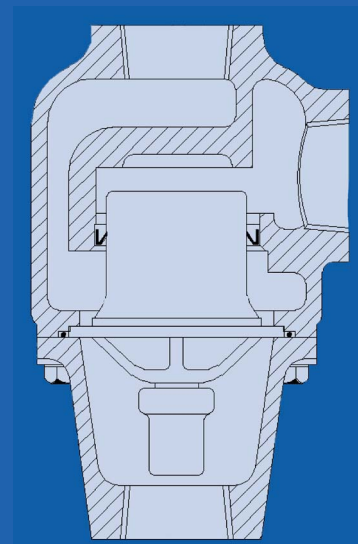
Together HUEGLI TECH and FPE offer well-engineered, yet cost-effective solutions to ensure that a wide variety of machines run at optimum efficiency, last longer and cost less.



Fluid Power Energy Inc

Typical Applications

- Power Generation
- Oil & Gas
- Downstream Petrochemical
- Marine
- Rail
- Mining
- Lube Oil Skids
- EPC (Engineering & Procurement Contractors)
- Hydraulic Motors
- Industrial Refrigeration & Cooling





THERMOSTATIC VALVES

Compact, reliable temperature control

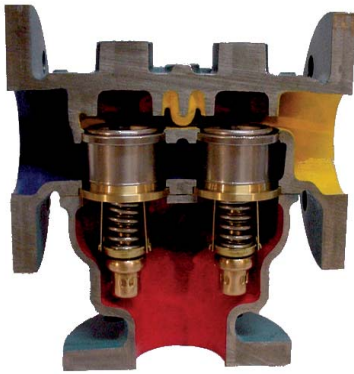
Thermostatic valves use the principle of expanding wax, which in the semi-liquid state undergoes large expansion rates within a relatively narrow temperature range. The self-contained element activates a stainless steel sleeve, which directs flow.

All FPE thermostatic valves are factory set at predetermined temperatures: no further adjustments are necessary. A wide range of temperatures are available for water and oil temperature control applications.

Features and Benefits

- Wide range of temperatures
- Mountable housing
- Heavy duty
- Self-contained
- Element replaceable without breaking connections
- Non-adjustable
- Rugged construction
- Tamper-proof
- Operates in any position
- Compact

FUNCTION OF THERMOSTATIC VALVES

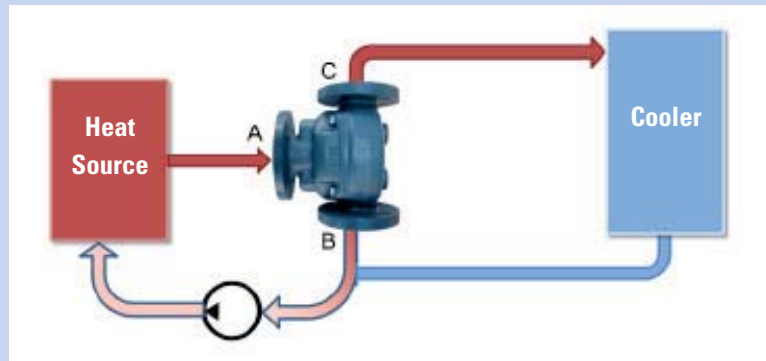


When the liquid reaches a predetermined temperature, the elements open and divert the flow to a different port. Liquid flows from yellow to red and is diverted to blue once the predetermined temperature is reached.

Possibilities of Use

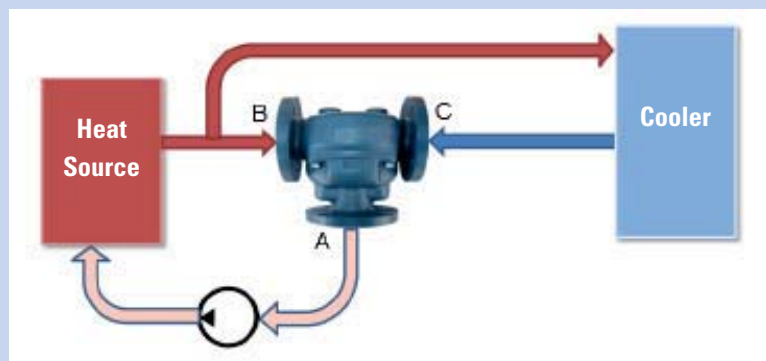
Diverting System

The liquid bypasses the cooler when cold & reaches the desired operating temperature quickly.



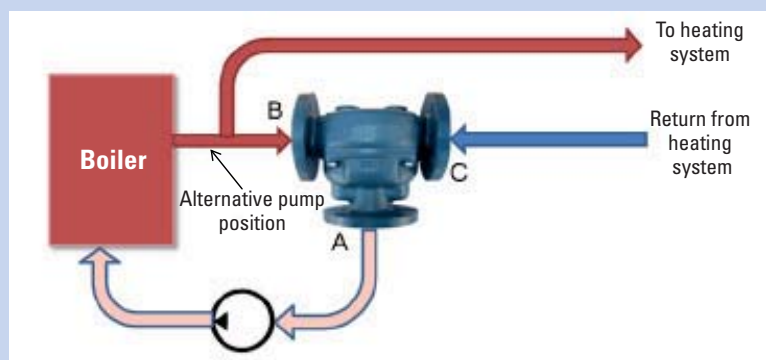
Mixing System

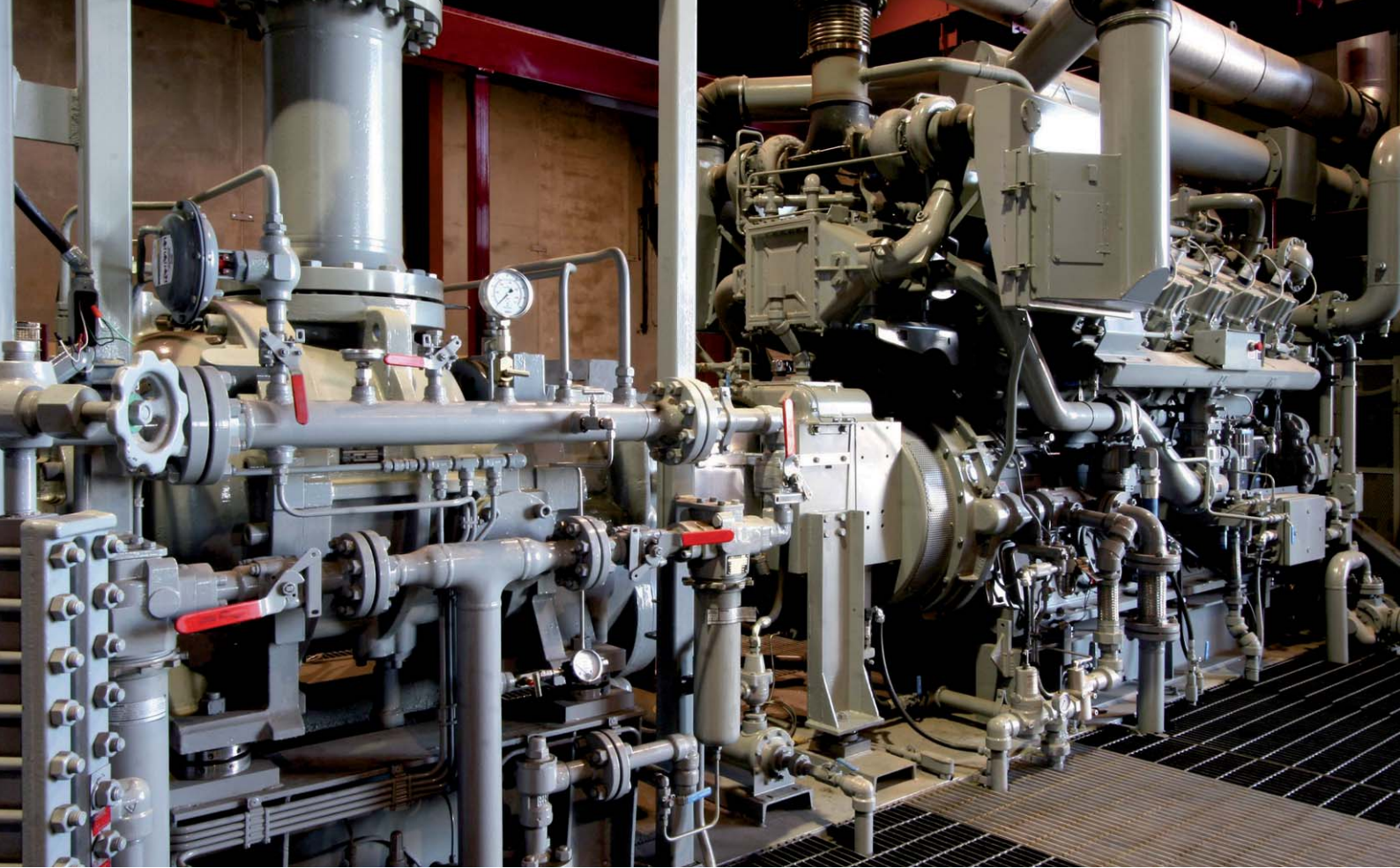
Hot water from the heat source and cold water from the cooler are mixed in the valve.



Boiler Return

Hot water from the boiler and cold water from the system are mixed in the valve.





PRODUCT RANGE

Model 0750



Model 1010



Model 1011



Model 1530



Model 2010



Model 2012 & 2013



Model 2014 & 2015



Model 2510



Model 3010



Model 4010



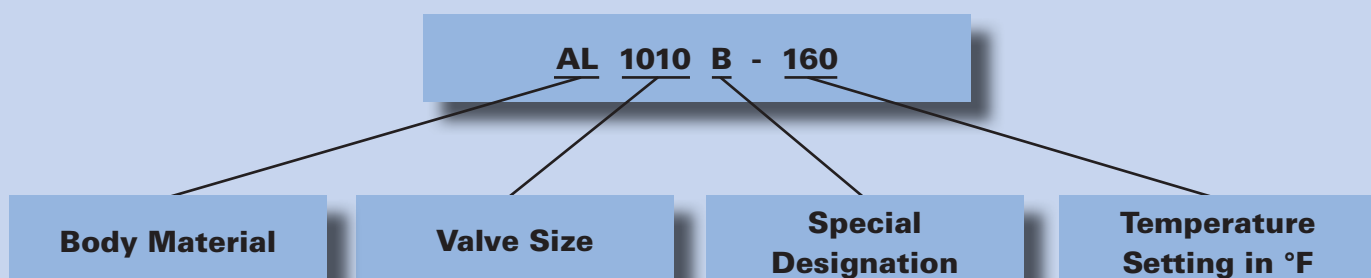
Model 5010



Model 6010



VALVE MODEL CODE SYSTEM



Body Material

Signature	Material
A	Cast Iron
AL	Aluminum
B	Bronze
D	Ductile Iron
S	Steel (Wcb)
SS	Stainless Steel (Cfsm)

Valve Size

Ventil's Diameter	Model	
1/2" NPT (AL & B Only)	0752	
3/4" NPT (AL & B Only)	0750	
1/2" NPT	(1210 Body)	1210
3/4" NPT		1110
1" NPT		1010
SAE #8		1010J8
SAE #12		1010J12
SAE #16	1010J16	
1/2" NPT	(Two Way, 1211 Body Size)	1211
3/4" NPT		1111
1" NPT 1211		1011
1 1/4" NPT		1400
1 1/2" NPT		1511
1 1/2" NPT	1530	
SAE #16	1530J16	
SAE #20	1530J20	
SAE #24	1530J24	
1 1/2" NPT	2010-1	
2" NPT	2010	
SAE #24	2010J24	
SAE #32	2010J32	
2" T-Style	20130	
SAE #24	2014-1	
SAE #32	2014	
2" T-Style, w/Mounting Provision	2015-1	
1 1/2" Socket Weld (Steel only)	201	
2" Socket Weld (Steel only)	2014	
1 1/2" Socket Weld (Steel only)	2015-1	
2" Socket Weld (Steel only)	2015	
2 1/2" FF FLG	2510	
3" FF FLG	3010	
4" FF FLG	4010	
5" FF FLG	5010	
6" FF FLG	6010	



Special Designation

Index	
A	BSPP (JIS Rp) Parallel Threads
B	BSPT (JIS Rc) Tapered Threads
C	No Cover
D	Low Flow Option
E	Neoprene O-Ring
F	Socket Weld Followed By Orifice Size In (32nds of an) Inch F16 = 1/2" Orifice
G	Private Label
K	Black Paint Finish
L	SS Channel
M	Manual Override
N	No Name Plate
P	Nickel Plated Element
S	Studs
T	Pressure Test* T20 = 200 W. press. T22 = 220 W. press. T24 = 240 W. press. etc...
U	Metric
V	Viton O-Ring
W	Weep Hole Followed By Size In (32nds of an) Inch W1 = 1/32" Weep Hole W2 = 2/32" Weep Hole W3 = 3/32" Weep Hole, etc..
X	Special Designation

Temperature Setting

Nominal °F	Nominal °C	Begins to open °F	Fully open °F	Begins to open °C	Fully open °C
45	7.2	32	50	0.0	10
55	12.8	47	68	8.3	20
65	18.3	55	75	12.8	23.9
75	23.9	68	86	20.0	30.0
80	26.7	70	90	21.1	32.2
90	32.2	*	*	*	*
95	35.0	86	104	30.0	40.0
100	37.8	85	110	29.4	43.3
105	40.6	*	*	*	*
110	43.3	100	117	37.8	47.2
115	46.1	*	*	*	*
120	48.9	110	130	43.3	54.4
130	54.4	120	140	48.9	60.0
135	57.2	*	*	*	*
140	60.0	127	152	52.8	66.7
145	62.8	*	*	*	*
150	65.6	140	160	60.0	71.1
155	68.3	*	*	*	*
160	71.1	150	170	65.6	76.7
165	73.9	156	174	68.9	78.9
170	76.7	160	180	71.1	82.2
175	79.4	170	185	76.7	85.0
180	82.2	175	190	79.4	87.8
185	85.0	180	195	82.2	90.6
190	87.8	185	200	85.0	93.3
195	90.6	180	202	82.2	94.4
200	93.3	190	206	87.8	96.7
205	96.1	195	215	90.6	101.7
210	98.9	200	215	93.3	101.7
220	104.4	209	225	98.3	107.2
230	110.0	219	239	103.9	115.0
240	115.6	226	252	107.8	122.2
250	121.1	240	260	115.6	126.7
260	126.7	250	270	121.1	132.2

*Please contact your local HUEGLI TECH distributor

The products described in this publication are subject to be revised or improved at any moment. Catalogue descriptions and details, such as technical and operational data, drawings, diagrams and instructions, etc., do not have any contractual value. In addition, products should be installed and used by qualified personnel and in compliance with the applicable regulations in force in order to avoid damages and safety hazards.

*due to preexisting agreements not all products are available in every country



Local Distributor / Partner:



HUEGLI TECH AG (LTD)
Murgenthalstrasse 30
4900 Langenthal Switzerland
Phone: +41 62 916 50 30
Fax: +41 62 916 50 35

e-mail: sales@huegli-tech.com
www.huegli-tech.com

Distributors in:*

EUROPE

AUSTRIA, BALTIC STATES, BELGIUM, DENMARK, EIRE, FAEROE ISLAND, FINNLAND, FRANCE, GERMANY, GREECE, GREENLAND, ICELAND, ITALY, MOLDAVIA, NETHERLANDS, NORTHERN IRELAND, NORWAY, POLAND, RUMANIA, SPAIN, SWEDEN, SWITZERLAND, UNITED KINGDOM, TURKEY.

FAR EAST AND AUSTRALIA

AUSTRALIA, CAMBODIA, CHINA, HONG KONG, INDIA, INDONESIA, JAPAN, KOREA, LAOS MIANMAR, MALAYSIA, NEW ZEALAND, PHILIPPINES, SINGAPORE, TAIWAN, THAILAND, VIETNAM.

MIDDLE EAST AND AFRICA

ALGERIA, EGYPT, IRAN, IRAQ, ISRAEL, LEBANON, SYRIA AND NIGERIA, PAKISTAN, SAUDI ARABIA, TUNESIA, UNITED ARAB EMIRATES.

NORTH AMERICA

USA, CANADA.