

## REWIND

### Parallel Applications

- Wireless connection around the world
- Geo mapping
- Permanent and efficient control
- Data logging and trending
- Cost saving



## Integrated system for remote control via GPRS technology

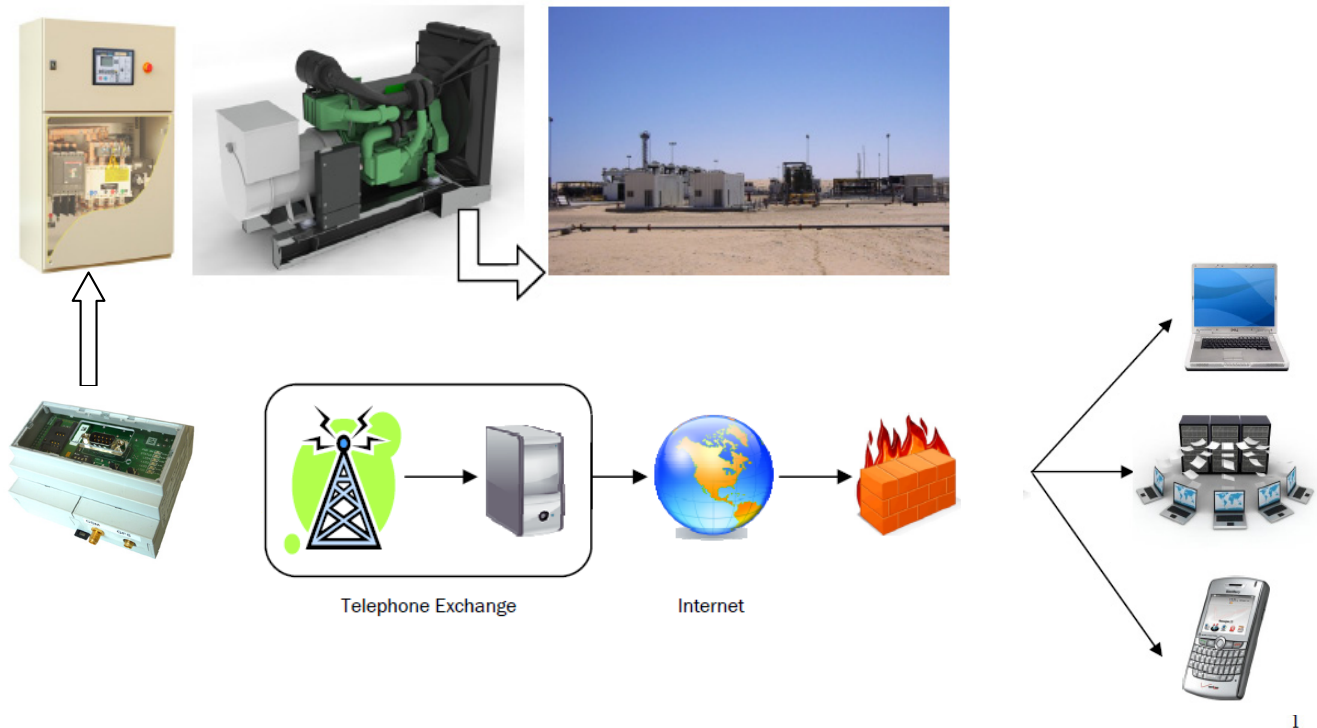
The integrated system for remote control of one or many generator sets via GPRS technology.

By means this innovative system, now it's possible transfer a **continuous stream of data** from the controller using the mobile network and connecting to internet. This technology allows you to monitor the status of gen sets by means a permanent communication with a "central farm" where data are collected, stored and are available to be analysed trough any internet browser (Internet Explorer or similar).

If the traditional communication system point-to point like GSM the price of service is based on time of connection, with GPRS system, you can benefit of a good **cost saving** considering phone traffic is calculated based on kilobyte and time no more.

What do you need to improve GPRS System? **REWIND** module! The electronic device which fit into the control panel and connected to Sices controllers allows to automatically send data with fixed intervals or in case of event to a central server reaching the benefit of a **smart and reliable control of a fleet of generator sets**.

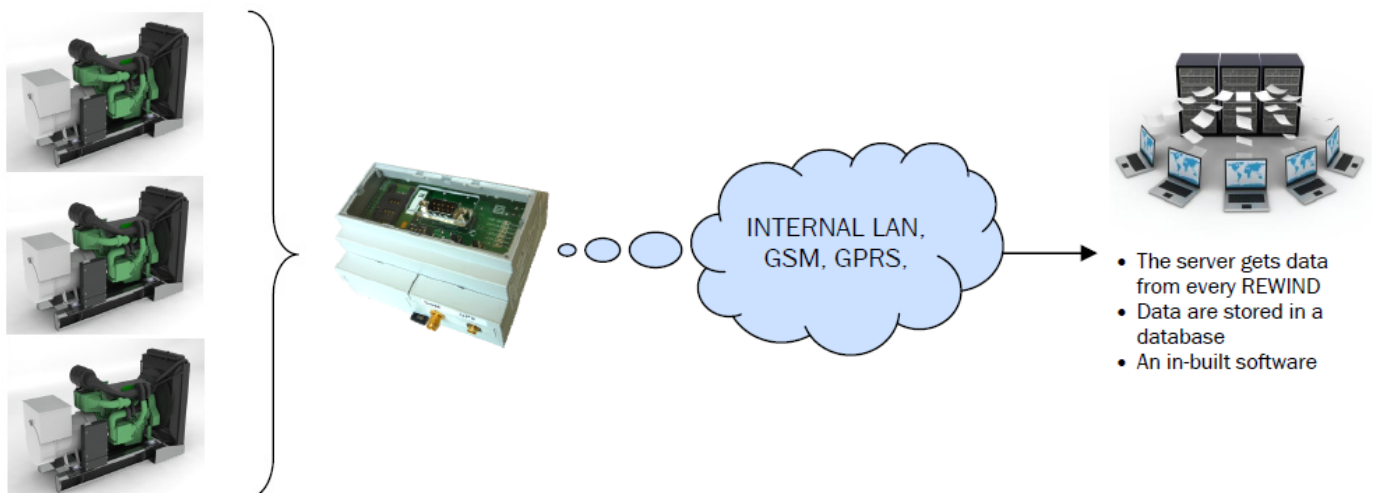
Benefits are many: cost saving for service assistance, mobile solution and coverage around the world implementing GPS system.

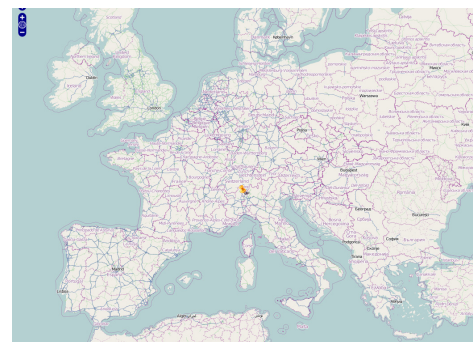
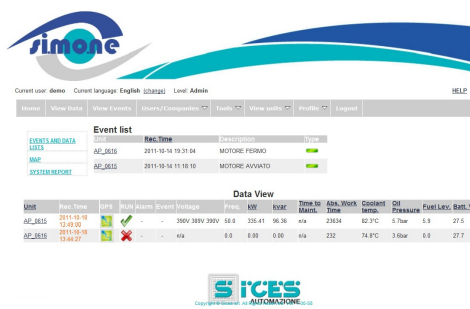


REWIND module can be any time reached through different ways:

- 1) By sending one SMS or calling it which will reply connecting itself to the system
- 2) Using dynDNs system

REWIND module, once installed into the control panels and connected via Modbus RTU to HT-Controller, comprises one modem GPRS/GSM and in option it's available GPS antenna which allows to immediately localize the gen set on a geo map. Data are automatically sent to a server having a static IP address where a proprietary software, always on, is installed. This software manages the requests of connections by the modules via internet. Every data are logged in a database and they are available to be checked by the operator (login with a own username and password) via internet.

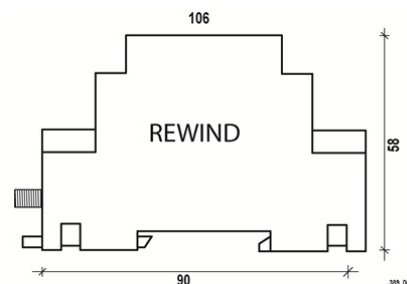
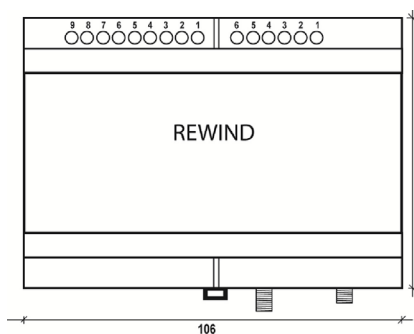




According to various levels of password, the enabled user can connect himself from any internet point and, once entered in his private area of SI.MO.NE (Sices Monitor Network), he can easily monitor in real time the status of gen sets around the territory. The operator can check from his desk the conditions of each machine, if they are running or shut down, how many hours they run, the energy produced and which alarms are accursed. In case of warning or shut down, the notice will be always on until the operator doesn't recognise the advice. Click on each advise of alarm the operator can have every detail of the event.

## Technical Data

Power.....Terminal Block (J1) 2 pin screw  
 Digital Outputs.....terminal (J1) 4 PIN screw  
 Digital inputs.....terminal (J2) 9 pin screw  
 Data.....RS232 9-pin Male  
 GSM Antenna.....SMA female  
 GPS Antenna.....SMA female  
 SIM.....plug-in 3V and 1.8 V



Local Distributor / Partner:



HUEGLI TECH AG (LTD)  
 Murgenthalstrasse 30  
 4900 Langenthal Switzerland  
 Phone: +41 62 916 50 30  
 Fax: +41 62 916 50 35

e-mail: sales@huegli-tech.com  
 www.huegli-tech.com