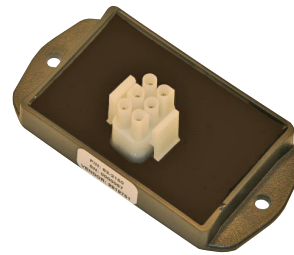


Automotive Headlight Flasher Module

Product Features

- Operating voltage range of 8-32 VDC
- Reverse battery protection
- Voltage transient protection
- Short circuit and over load protection
- Up to 10.0A per output
- Small footprint
- Potted - protection from harsh environments
- Easy 2 point mounting / rugged ABS housing
- Customizable



Automotive Headlight Flasher Module

This 2 output device will operate a 2 or 4 headlight system and flash each output at a frequency of 115 times per minute. In low light conditions, the low beam lamps remain "ON" and the high beam lamps flash to draw attention to the vehicle. When the high beam lamps are activated, the flashing sequence is turned off and remains off until the high beam lamps are deactivated.

Unit Connections

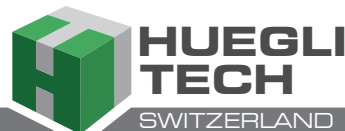
Pin 1	Main power (8-32 VDC)
Pin 2	Enable switch (+V = ON)
Pin 3	High beam out 1
Pin 4	Ground (- Battery)
Pin 5	Park input
Pin 6	High beam out 2

Note: This flasher module does not include the mate connector or wire harness. HUEGLI TECH can provide these components when requested.

Electrical Specifications

Power Supply Voltage	8-32 VDC
Output Current	10.0A Max
Standby Current	< 10mA
Flashing Sequence	115 cycles/min
Operating temperature	-40° to 85°C
IP rating	-40° to 85°C
Weight	0.15 lbs. Typ

Note: Outputs will not flash upon power up unless the enable switch is "ON".



HUEGLI TECH AG (LTD)
Murgenthalstrasse 30
4900 Langenthal Switzerland
Phone: +41 62 916 50 30
Fax: +41 62 916 50 35

e-mail: sales@huegli-tech.com
www.huegli-tech.com