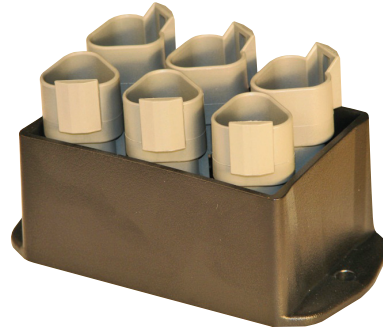


## J1939 Bus Splitter

### Product Features

- Reduces bus harnesses
- Reduces bus connections
- Several standard configurations
- Small footprint
- Potted - true IP67 rating
- Easy 2 point mounting / rugged ABS housing
- Customizable



## J1939 Bus Splitter

This CAN bus splitter provides a cost effective and space efficient way of connecting multiple devices to the J1939 CAN bus. This module reduces cost by eliminating Y adapters and extra harnesses typically used to provide additional connections to the bus.

### Unit Connections

J1939 In connector	.....	DT04-3P
Mate connector	.....	DT06-3S
Mate contact	.....	0462-201-16141
Mate wedge lock	.....	W3S-1939
J1939 Out connector	.....	DT04-3P
Mate connector	.....	DT06-3S
Mate contact	.....	0462-201-16141
Mate wedge lock	.....	W3S-1939
Bus connections (4)	.....	DT04-3P
Mate connector	.....	DT06-3S
Mate contact	.....	0462-201-16141
Mate wedge lock	.....	W3S

### Environmental Specifications

Storage temperature	.....	-40° to 85°C
Operating temperature	.....	-40° to 85°C
IP rating	.....	67
Weight	.....	0.40 lbs. Typ
Dimensions	.....	2.000" W / 3.125" L / 2.250" H
Mounting holes (2)	.....	3.500" apart 0.188" Dia.



HUEGLI TECH AG (LTD)  
Murgenthalstrasse 30  
4900 Langenthal Switzerland  
Phone: +41 62 916 50 30  
Fax: +41 62 916 50 35

e-mail: [sales@huegli-tech.com](mailto:sales@huegli-tech.com)  
[www.huegli-tech.com](http://www.huegli-tech.com)