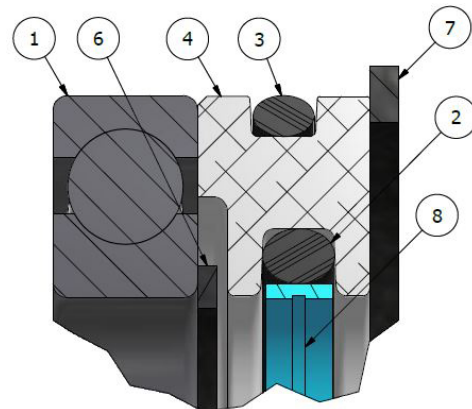


Document:	Datasheet	Author /Date:	MLU / 22.12.2015
Version:	V1.0	Approved /Date:	PM / 22.12.2015
Category:	Hydrotor		

Service Kit KT-207387 to A & B Series (ex CMO & CMA)

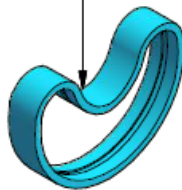
PARTS LIST			
ITEM	QTY	PART NUMBER	DESCRIPTION
1	1	BB-100083	BALL BEARING
2	1	GA-100088	O-RING
3	1	GA-100104	O-RING
4	1	HP-203078	SEAL HOLDING PIECE
5	2	KY-2-5	WOODRUFF KEY
6	1	RG-100039	RETAINING RING
7	1	RG-100041	RETAINING RING
8	1	RG-1136	SLIPPER SEAL



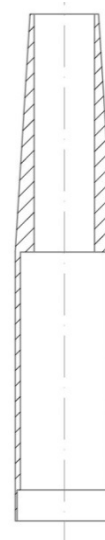
SEAL ORIENTATION
SCALE 4 : 1

Assembly Instructions

DEFORM DOWNWARD INTO
KIDNEY STYLE SHAPE AS SHOWN



RG-1136 (INSTALL)



Assembly tool EHS-41-2857

Assembly Notes

Only one of item 5 is used in A Series Motor assembly.
Use Assembly tool EHS-41-2857 to avoid damages during mounting.